

Smart Instrument Reprocessing begins and ends with SciCan

Instrument Reprocessing

Product Guide



Leadership in Infection Control

Through a sustained legacy of product innovation and refinement, SciCan has set the benchmark for sterilization and instrument reprocessing technology in over 90 countries around the world.

Originally founded in 1957, SciCan develops and manufactures highly innovative infection control products that address the need for speed, flexibility, and efficiency in today's environments. In 1989, SciCan developed and produced an internationally recognized

infection control innovation, the *STATIM* Cassette Autoclave. In the years since, SciCan continues to be at the forefront of technology with the release of the *HYDRIM* Instrument Washers, *BRAVO* Chambered Autoclaves, and *G4* Networking Technology.

SciCan's *HYDRIM*, *STATIM*, *BRAVO* and *STATCLAVE* are designed to be the fastest and most efficient instrument washers and autoclaves on the market.

A world map with a dark grey background. Numerous glowing white and light blue circles of varying sizes are scattered across the map, representing global locations. Overlaid on the map are several glowing cyan lines that resemble circuit board traces, connecting various points across the continents.

Navigation

- 4** SciCan SPEC
- 6** BioSonic UC150
- 8** STATMATIC
- 10** VistaPure
- 12** HYDRIM G4
- 14** STATCLAVE G4
- 16** STATIM G4
- 18** VistaClear
- 19** ENSURE
- 20** OPTIM
- 22** G4 Technology
- 23** Parts & Accessories

Is Your Steri-Center up to SciCan SPEC™?

An often overlooked part of many dental offices is the sterilization area, which is the heart of every practice. If instruments can't efficiently flow into and out of the sterilization area, the rest of the practice will suffer.

We have created the "SciCan's Steri-Center SPECS" educational campaign, as well as trained Regional Infection Control Trainers nation-wide, to help offices design steri-centers that meet "SciCan's Steri-Center SPECS"; meaning that the steri-center will improve Safety, ensure Predictable results, maximize Efficiency, and maintain Compliance.

Following SciCan's Steri-Center SPECS will help you get the most out of your sterilization area and the equipment you put in it.



Safe

Dental instruments should be processed in the safest and most efficient way possible to reduce the risk of staff injury and the costs associated with exposure incidents.

It is not only important to prevent exposures from sharps, but also from biologically contaminated fluids and aerosols generated by open-lid ultrasonic cleaning and cold sterile solutions. Systems should also be in place to ensure that instruments are safe for use on patients by preventing contamination of instruments after they are processed.

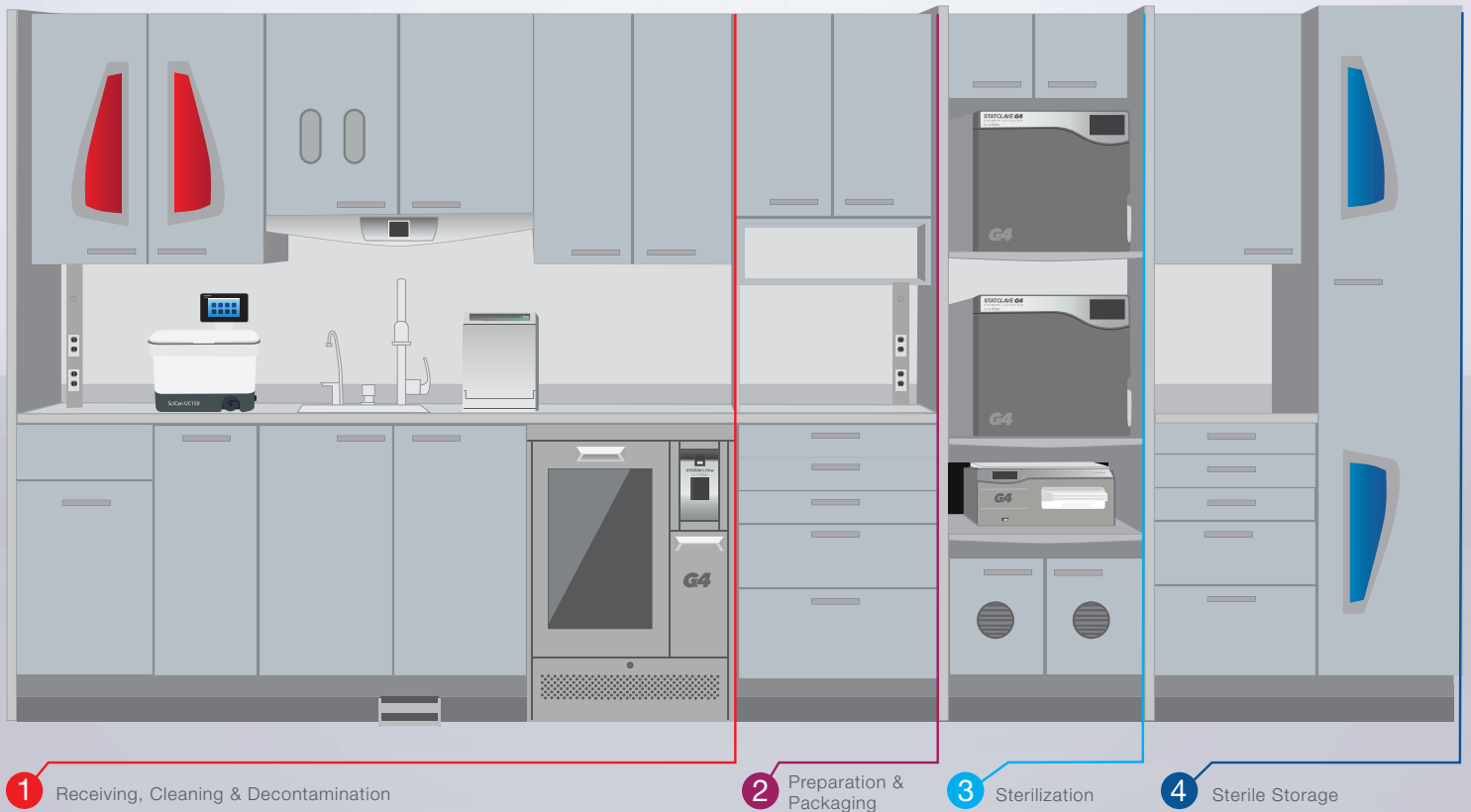


Predictable

To avoid delays and interruptions in your clinical workflow, you need to be able to count on having clean, sterile, and dry instruments every time you need them.

You also want to be confident that contaminated instruments can flow through the reprocessing steps in your sterilization area quickly and consistently every time. Automation, redundancy, and reliability are the 3 keys to ensuring that this happens.

A well designed Steri-Center should improve **Safety**, ensure **Predictable** results, maximize **Efficiency**, and maintain **Compliance**.



Efficient

Speed comes from using processes and equipment that maximize efficiency and reduce manual labor. This applies to the way instruments flow through your office and sterilization area, as well as the equipment you use to reprocess instruments.

Manual labor should be eliminated wherever possible so that dental staff can focus on tasks that can't be automated; such as operatory clean-up and preparation.



Compliant

Instrument reprocessing should meet all federal OSHA standards, the 2003 and 2016 CDC dental guidelines, and all state dental laws. This not only protects dental staff and their patients, but it also protects the office from costly and reputation-damaging infection control violations.

Designing your sterilization area with compliance in mind from the start is the easiest way to make sure that you maintain compliance.

BioSonic[®] UC150

Ultrasonic Cleaning System

With its sleek Swiss design, the BioSonic UC150 is built for versatility, efficiency and convenience.

The UC150 can be used as a countertop or recessed unit, allowing flexibility in any sterilization center setting.



Maximized Counter Space

The BioSonic UC150 can sit directly on the countertop or be recessed offering ultimate versatility in your work space.





The 1.5 gallon stainless steel tank offers a small footprint but generous capacity, holding up to 4 exam cassettes.



Versatility

1.5 Gallon/5.7L stainless steel tank.
Holds up to 4 exam instrument cassettes.
Can be used as a countertop or recessed unit, allowing for flexibility in any sterilization center setting.



Convenience

Quiet operation (63 dB).
Glove-friendly touch screen.
Quick draining with externally accessible drain.



Efficiency

Data logging capability.
Fits multiple cassettes at once.
Multiple cleaning configurations with basket, beakers, and cassettes.

STATMATIC™*

Care System for Handpieces

STATMATIC automatic care and maintenance system properly cleans, lubricates, and purges up to 3 handpieces prior to sterilization.



10 Year Warranty

Highest quality stainless steel design, long working life – you can rely on STATMATIC.



Unique Chuck Cleaning

The STATMATIC also incorporates a unique chuck cleaner to dislodge debris inside the chuck. You and your staff will profit from greater efficiency, fewer repairs, and extended durability of your handpieces.



Extends the Life of your Handpieces

Properly cleans, lubricates, and purges your handpieces to increase their working lifetime.



Optimizes Staff Productivity

Automated process optimizes working procedures in your practice, allowing staff to focus on alternative tasks.

Up to 3 handpieces can be cleaned, lubricated, and purged in less than a minute.



Chuck Cleaner

Cleans and lubricates the chuck to keep burs from sticking or falling out.

VistaPure™†

Water Filtration

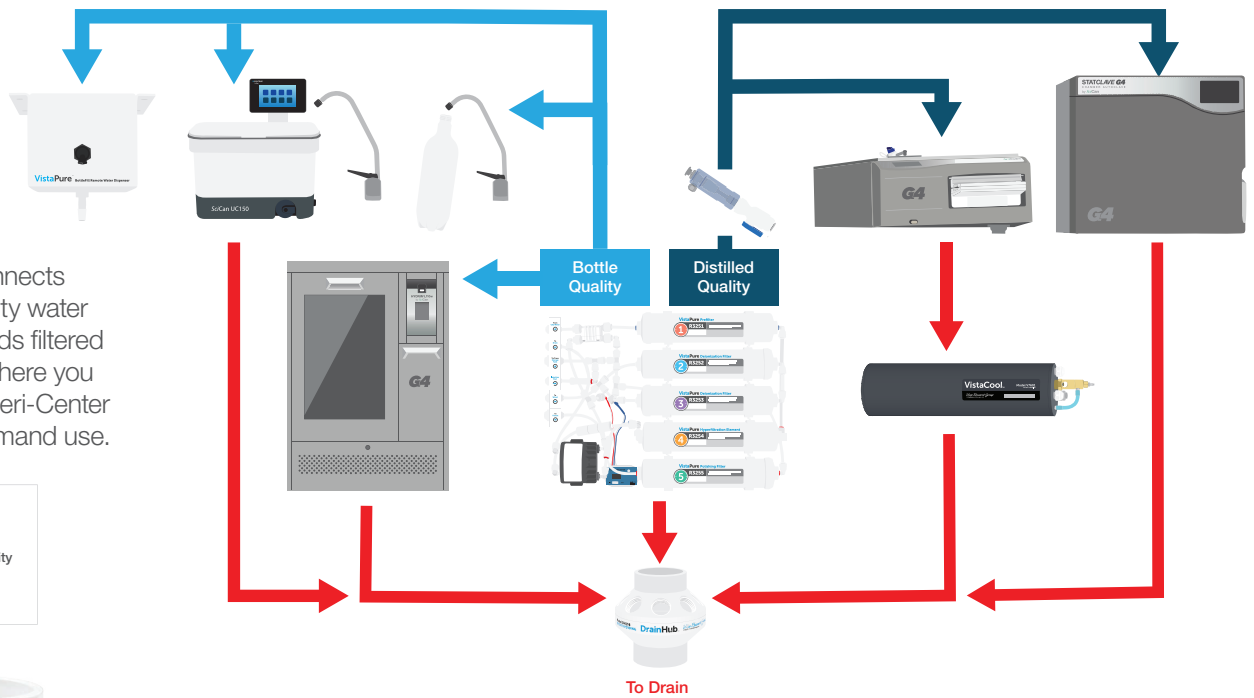
VistaPure is a specialized water filtration system for STATIM Cassette Autoclaves, BRAVO Fractionated Vacuum Sterilizers, STATCLAVE G4 Autoclaves, HYDRIM Instrument Washers, ultrasonic cleaners, dental bottles, and other select autoclaves and instrument washers.

VistaPure provides two grades of high-quality water for the ultimate efficiency; one for use in instrument washers and for filling dental bottles, and the other for filling autoclaves.



VistaPure System

The system connects directly to the city water supply and sends filtered water exactly where you need it in the Steri-Center for easy, on-demand use.



DrainHub™⁺ Multi-port drain adapter

The patent-pending device accepts up to eight drain connections in one small hub; saving space, cost, and time.

VistaPure AutoFill for STAT/M

Deliver distilled-quality water to your STAT/M autoclave automatically. You'll never have to fill your STAT/M manually again.

VistaPure AutoFill for BRAVO

Replenish the BRAVO's refill tank with distilled-quality water automatically—enabling truly hands-free convenience.

HYDRIM Connection Kit.



Easy to Use

VistaPure's handheld, point-and-shoot wand makes it easy for anyone to fill autoclaves no matter where they're located. The optional Remote BottleFill Water Dispenser makes it easy to fill dental unit bottles in from the clean side of the Steri-Center.



Convenient

VistaPure provides a high volume of ready-to-use water on-demand. Its large 4.25-gallon storage tank means you don't need to wait for the hyperfiltration process to take place.



Consistent

Each VistaPure features an in-line TDS meter that monitors water quality and makes it easy to know when it's time to replace your filters.

HYDRIM® G4

Instrument Washers

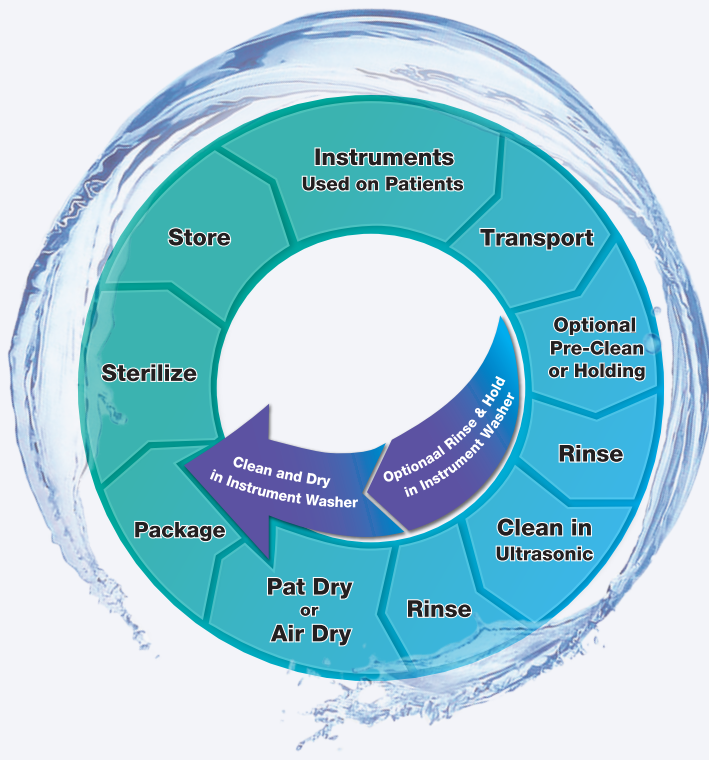
HYDRIM G4 automated instrument washing is the first step in the sterilization process.



Cleaning is one of the most important steps in the instrument reprocessing procedure.

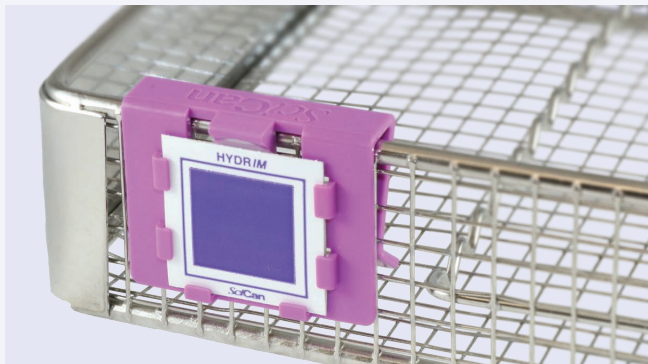
In order to achieve effective disinfection and sterilization, the instruments need to properly be cleaned first. Washers have been proven to be the most safe and effective way to clean instruments, which is supported by many regulating authorities and dentists worldwide.





Instrument Reprocessing Steps

HYDRIM reduces the number of instrument reprocessing steps; increasing efficiency and decreasing sharps exposure risk.



Wash Test Indicators (WTI)

Think of it as a routine check-up for your washer

The HYDRIM Wash Test Indicators (WTI) have been designed to provide two-dimensional validation of HYDRIM washing efficacy. It is a simple, easy-to-use indicator that ensures instruments are effectively and consistently cleaned with HIP Cleaning Solution.



Efficient

The time saved by automated washing compared to manual cleaning is approximately 1 hour of labor for every nine procedural set-ups¹. HYDRIM G4 cycle times are as fast as 40 minutes from start to dry. HYDRIM G4 ensures that every set of instruments receives the same validated cleaning process.



Safe

Avoid the many dangerous steps involved with manual washing or using ultrasonic cleaners. Pre-soaking, scrubbing, and drying instruments before sterilization increases the exposure to blood and bodily fluids and the risk of sharps injuries. HYDRIM G4 saves time, money and is a worthy investment for today's standard of care.



G4 Networking Technology

There is nothing like SciCan's G4 Networking Technology. The large touch screen gives in-depth cycle information and allows users to view current operations. From the networking portal, users can access cycle history and validation information. If there is ever a cycle fault, the G4 software will send an email to the office and the service technician, allowing for remote troubleshooting.



Large Capacity

HYDRIM L110W G4 has a 10 full-size cassette capacity with optional rack, allowing offices to turnover 200 instruments in as little as 44 minutes, start to dry.* HYDRIM C61W G4 has a 6 full-size cassette capacity with optional rack, allowing offices to turnover 120 instruments in as little as 40 minutes, start to dry.*

* Actual cycle times will vary with incoming water temperature and pressure.

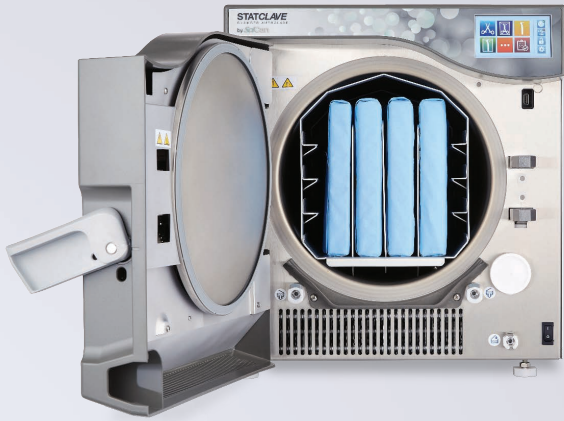
¹ Tholen, Mark, Increase production and decrease expenses in sterilization." Dental Economics, Volume 99, Issue 10, October 1, 2009

STATCLAVE[®] G4

Chamber Autoclaves

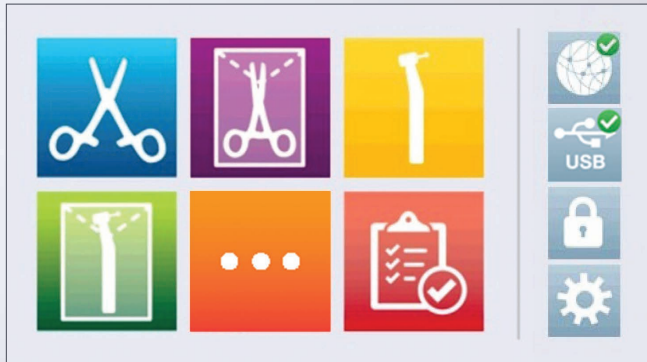
STATCLAVE G4 is a Class B vacuum sterilizer that incorporates both pre-sterilization vacuum to improve steam penetration and post-sterilization vacuum to improve drying.





Large Chamber (11")

STATCLAVEs 11" chamber and vacuum-assisted closed-door drying efficiently delivers sterilized and dried wrapped instruments.



G4 Technology

SciCan's G4 equipment can connect and send information to your smart devices so you can have cycle data, instructions, and maintenance notifications at your fingertips.



Fast

STATCLAVE can efficiently turnover wrapped instruments, sterilizing and drying in as little as 38 minutes.



Dry

Closed-door drying and vacuum technology results in perfectly dried instruments every time.



Capacity

STATCLAVE can sterilize up to 4 full-size cassettes and 4 exam cassettes or 20 pouches.



Gentle

Fresh water is used in every cycle, reducing the buildup of oils and debris.



Versatile

STATCLAVE offers a number of filling & draining options, including easily accessible and cleanable top reservoirs, front manual fill and a rear automatic fill option that can be connected to the VistaPure water filtration system for automated filling.

STATIM[®] G4

Cassette Autoclaves

STATIM provides sterilization and dryness at speeds faster than conventional chamber autoclaves.





VistaCool™[†] Direct-to-Drain System

VistaCool is a validated, reliable, and maintenance-free solution that safely converts vented steam to water used in sterilization directly down the drain, eliminating the need for the STATIM's condenser bottle.



VistaPure Autofill[†]

Automatically Refill your Autoclaves

Replenish any new or older-model STATIM autoclave with distilled-quality water automatically, enabling truly hands-free convenience.



SciCan SPEC Packages

Minimize handling of instruments and increase staff productivity with improved efficiencies. Invest in your steri-center, the infection control hub of your practice. Contact your local SciCan Representative for details.



Fast Cycle Times

STATIM 2000 G4 unwrapped cycle times are the world's fastest at 6 minutes. Wrapped cycles, including drying, can be completed in 35 minutes.

STATIM 5000 G4 can complete unwrapped cycles in as little as 9 minutes. Wrapped cycles, including drying, can be completed in 40 minutes.



Gentle

The fresh water feature guarantees fresh water with every cycle. State-of-the-art steam technology is gentle on both solid and hollow instruments.



Reliable

For over 25 years, STATIM's unmatched speed, reliability, and flexibility have made it one of the world's best selling tabletop autoclaves.



G4 Networking Technology

SciCan's G4 equipment can connect and send accurate information to your smart devices so that you can have cycle data, instructions, and maintenance notifications at your fingertips.



Capacity

STATIM G4 autoclaves not only offer fast sterilization times but also enough capacity to meet the needs of a busy practice. The STATIM 2000 G4 capacity allows for up to 4 pouches and the STATIM 5000 G4 allows for up to 12 pouches.

VistaClear™ DP

Centralized Waterline Treatment System

The VistaClear Centralized Waterline Treatment System provides filtered procedural water directly to dental operatories—eliminating the need for bottle systems and storage tanks! The system’s micron-level filtration, built-in backflow prevention and patented method for waterline cleaning save practices time and money while protecting dental equipment.

A DentaPure™ Cartridge and carbon block filter are provided with the VistaClear DP Centralized Waterline Treatment System.



Saves time.

The system’s on-demand filtration eliminates wait time and the need for storage tanks and bottle systems. And the DentaPure Cartridge provided with the system eliminates the need for regular cleaning protocols to make waterline maintenance much easier and more efficient.



Saves money.

The system includes CSA-certified backflow preventers that eliminate the need for reduced pressure zone (RPZ) devices and the ongoing cost of annual inspections. It also eliminates the need for purchased water and daily maintenance products.



Protects equipment.

With micron-level filtration and no harmful chemicals, the system protects expensive handpieces and turbines from the wear-and-tear typical water supplies can inflict. The system removes virtually all contaminants that often reside in city water supplies.

Ensure™

Monitoring for Steam Sterilization



The Ensure line of infection control monitoring products ensures your equipment is performing at its peak.

It includes a range of products that are simple, easy to use, and help to ensure your patients are being kept safe with every cycle.

Designed to help keep your patients safe with every cycle.



Easy

Provide the highest level of sterility assurance with easy-to-read indicators, which clearly identify if an instrument load met the expected parameters for sterilization.



Capacity

The 10-well incubator allows you to monitor up to 5 sterilizers at one time, providing you with easy-to-read results that show whether sterility has been achieved or not.



Reliable

Meets the most stringent requirements in today's changing regulatory environment.

OPTIM[®] 1

One-Step Cleaner & Intermediate-Level Disinfectant

With a 1 minute broad-spectrum contact time, OPTIM 1 is one of the fastest and most effective cleaner & intermediate-level disinfectants. It is listed as a category IV, the EPA's lowest toxicity category.



Surface Disinfectant Contact Time*

Product Name	Active Ingredient	Mycobacteria		Non-enveloped Viruses					Enveloped Viruses				Bacteria				Fungicidal
		TB	Adeno	Polio	Noro	Rota	RSV	HIV	HBV (Hep.B)	HCV (Hep.C)	Influenza A	MRSA	VRE	E.coli	PSA		
OPTIM 1	0.5% Accelerated Hydrogen Peroxide	1	30 sec	30 sec	30 sec	30 sec	30 sec	30 sec	30 sec	30 sec	30 sec	1	1	1	1	30 sec	
OPTIM 33TB	0.5% Accelerated Hydrogen Peroxide	5	1	1	1	1	1	1	1	1	1	1	1	1	1	10	
Birex SE	Phenolics	10					10			10		10		10	10	10	
ProSpray	Phenolics	3					1			3		3		3	3	3	
Caviwipes1	Quats-alcohol	1	3				1	1	1	1	1	1	1	1	1	1	
Caviwipes	Quats-alcohol	3					2	2	2	3	2	2		3	3	3	
Caviwipes AF	Quats	5					2	5	5	5	5	5	5	5	5	5	
Opticide 3	Quats-alcohol	2		3	3	2	2	2	2	2	2	2	2	2	2	2	
Sanicloth AF3	Quats	3	3			3	3	30 sec	3	3	3	3	3	3	3	3	
Sanicloth Super	Quats-alcohol	1	2			2	2	2	2	2	2	2	2	2	2	2	
Sultan Volo	Quats-alcohol	2					2	2	2	2	2	2	2	2	2	2	
Discide Ultra	Quats-alcohol	1	1				1	1	1	1	30 sec	1	1	1	1	1	
Lysol IC 111	Quats-alcohol	6	3	1	10	30 sec	30 sec	30 sec	30 sec	30 sec	30 sec	2	2	2	2	2	
Clorox HP Wipes	1.4% Hydrogen Peroxide	5			3	1	30 sec	30 sec	30 sec	30 sec	1	1	30 sec	30 sec	30 sec	5	

* Contact time in minutes. If blank, no published information was available. Information was obtained from publicly available material in September of 2016. Information will be updated if there are changes in claims.



The Perfect Balance

OPTIM 1 provides the confidence that you are compliant and mindful without compromise.



On the EPA List N

Disinfectants for use against SARS-CoV-2

Tuberculocidal	1 MIN.
Virucidal*	30 SEC.
Bactericidal	1 MIN.
Fungicidal	30 SEC.
Broad-Spectrum Non-Food Contact Sanitizer	10 SEC.
Active Ingredient:	
Hydrogen Peroxide	0.5%
Inert Ingredients	99.5%
Total	100.0%

KEEP OUT OF REACH OF CHILDREN

EPA Reg. No. 74559-10-83259
EPA Est. No. 74559-CAN-1

Net Contents:
1 pound 14 ounces (850 grams)
160 Sheets: 6 in. x 6.75 in. (15.24 cm. x 17.14 cm.)



SciCan
www.scican.com

USA Patent #: 7,632,523 & 7,354,604



In the Lowest EPA Toxicity Category

In the lowest EPA toxicity category, category IV. No GHS hazard pictograms, signal words or statements required. No VOCs (volatile organic compounds).



Time and Cost Efficient

Half as many wipes as the leading competitor are needed to keep your surface wet long enough to achieve disinfection³



Sustainable

Active ingredient, Hydrogen Peroxide, breaks down into water and oxygen. No active residues reduce environmental impact



Effective One-Step Cleaner

Removes organic debris while disinfecting, saving you time and money¹



Fast Broad-Spectrum Disinfectant

1 minute contact time ensures compliance, saving you time and money²



Compatible

Designed to be compatible with a wide range of materials⁴

¹ John Molinari, PhD, Peri Nelson, BS, and Devi J.V. Raghavan, BDS. OPTIM 1 Cleaning and Disinfection Study. Ann Arbor: Dental Advisor, 2016.

² John A. Molinari, Ph.D., Peri Nelson, B.S., Antonia Molinari. Environmental Surface Wetness Test: Comparison of Disinfectant Wipes. Ann Arbor: Dental Advisor, 2016.

³ John A. Molinari, Ph.D., Peri Nelson, B.S., Antonia Molinari. Environmental Surface Wetness Test: Comparison of Disinfectant Wipes. Ann Arbor: Dental Advisor, 2016.

⁴ John Molinari, Ph.D., Peri Nelson, B.S. Effect of OPTIM 1 on Tensile Properties of Dental Chair Fabrics. Ann Arbor: Dental Advisor, 2016.

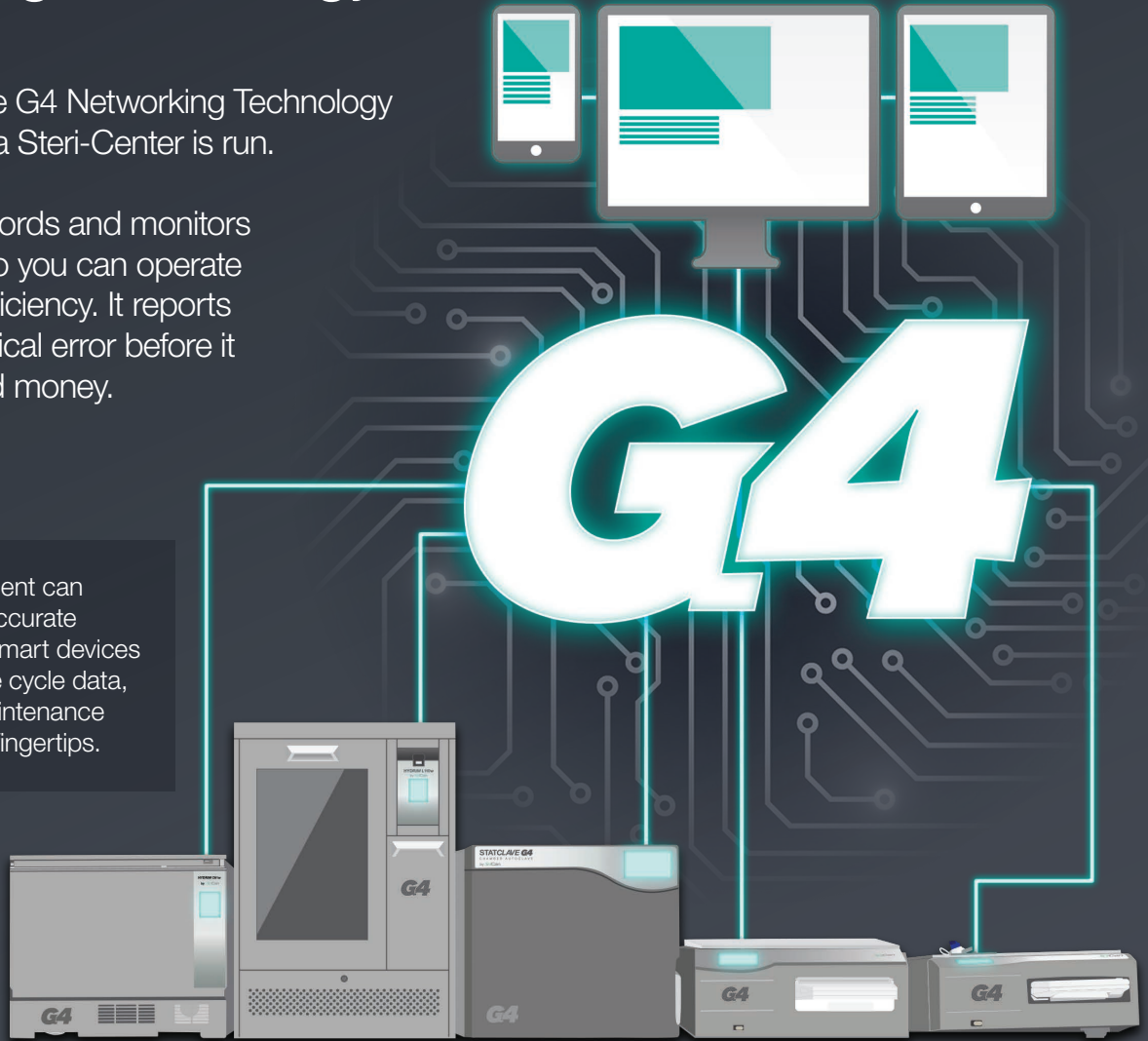
G4

Networking Technology

SciCan's innovative G4 Networking Technology simplifies the way a Steri-Center is run.

It automatically records and monitors every cycle 24/7 so you can operate with the utmost efficiency. It reports human or mechanical error before it costs you time and money.

SciCan's G4 equipment can connect and send accurate information to your smart devices so that you can have cycle data, instructions, and maintenance notifications at your fingertips.



Accurate Cycle Data

Peace of mind knowing cycle data is accurately logged and will remain accessible at any time from any smart phone, tablet, or computer.



Remote Technical Support

Instant and accurate connection to specialized technicians allows equipment to be remotely supported.



Reliable

Maintenance reminders and instructions help keep your equipment in good working order.



Software Updates

Automatic user interface updates to your G4 connected machines. No delays due to software interference.

Part Number	Model
STAT/IM G4 Autoclaves	
G4-121101	STAT/IM 2000 G4
G4-201103	STAT/IM 5000 G4
Recommended Accessories	
01-115325S	STAT/IM 2000 Service Kit
01-115326S	STAT/IM 5000 Service Kit
01-112406S	Cassette Complete STAT/IM 2000 G4
01-114989S	Cassette Complete STAT/IM 5000 G4
01-100028S	Cassette Seal & Lube Kit STAT/IM 2000
01-101649S	Cassette Seal & Lube Kit STAT/IM 5000
01-100207S	Air Compressor Filter STAT/IM 2000 G4
01-101652S	Air Compressor Filter STAT/IM 5000 G4
01-102119S	Biological Filter STAT/IM 2000 G4 and STAT/IM 5000 G4
STATCLAVE G4 Chamber Autoclaves	
G4-621103	STATCLAVE G4, 120V, 60Hz, 10A
G4-622303	STATCLAVE G4, 208-240V, 60Hz, 12A
Recommended Accessories	
01-115487S	Chamber Rack
01-115482S	Wire Instrument Tray
01-115483S	Pouch Rack
01-115485S	Tray Extractor with Door Unlock Pin
01-115484S	Drying Plate
01-115481S	Door Seal
01-115479S	Bacteriological Air Filter
01-115478S	Chamber Filter Kit (3 Filters)
01-115717S	Automatic Filling Kit (10L Jug and Pump)
HYDR/IM G4 Instrument Washers	
L110W-D01-G4	HYDR/IM L110W G4 Instrument Washer
C61W-D01	HYDR/IM C61W G4 Instrument Washer
Recommended Accessories	
CS-HIPL	HIP Cleaning Solution for HYDR/IM L110W
CS-HIPC-U	HIP Ultra Solution for HYDR/IM C61W
01-113277S	Air Filter for HYDR/IM C61W
WTI-SK	Wash Test Indicator (Starter Kit)
WTI-RK	Wash Test Indicator (Refill Kit) (96 Indicators)
WTI-HOLDER	Wash Test Indicator (Holder)
ENSURE*	
SCI-BISK-120	Ensure BI Starter Kit
SCI-BINC-120	Ensure Incubator
SCI-BILOG	Ensure BI System Log Book
SCI-BI100	Ensure BI's (100 Count Refill Boxes)
SCI-BI25	Ensure BI's (25 Count Refill Boxes)
SCI134-US	Type 4 Chemical Indicator Strips (250 Count)
SCI-T5	Ensure Type 5 Integrators (100/Bag)
SCI-SCP	Ensure Sterilization Pouches (200/Box)
STATMATIC and Spray*	
S30000-NA	STATMATIC
Recommended Accessories	
STM500-6NA	STATMATIC Spray
S30102	Absorption Pad (6 pack)
S30101-BA	Maintenance Coupling Bien Air
S30101-E	Maintenance Coupling E-type
S30101-KVH	Maintenance Coupling KaVo Intra Head
S30101-MW	Maintenance Coupling Midwest Slow Speed
S30101-CX	Maintenance Coupling MULTiflex/Connex
S30101-NSK	Maintenance Coupling NSK
S30101-ST1T	Maintenance Coupling Sirona T1 Highspeed
S30101-ST1I	Maintenance Coupling Sirona T1 Instrument
S30101-W&H	Maintenance Coupling W&H

Part Number	Model
VistaPure†	
V3000	VistaPure System Complete
Recommended Accessories	
R3250	2 Year Filter Package
R3251	Prefilter Element (Position #1)
R3252	Deionization filter (Position #2)
R3253	Deionization filter (Position #3)
R3254	Hyperfiltration Element (Position #4)
R3255	Polishing Filter (Position #5)
S9110	Optional 2.5 gallon net Storage Capacity Water Tank
S9111	Optional 4.25 gallon net Storage Capacity Water Tank
S9113	Optional 9.5 gallon net Storage Capacity Water Tank
S3010	HYDR/IM VistaPure Connection
S3015	STATCLAVE VistaPure Connection
S3050	VistaPure BottleFill Remote Water Dispenser
VistaPure AutoFill†	
S3020	VistaPure Autofill - STAT/IM
S3030	VistaPure Autofill - BRAVO
DrainHub†	
DH158	Drain Hub 8 Hole
DH-158-82	8 hole Hub with fittings
DH8200	All recommend fittings
VistaCool†	
V7501	VistaCool - Single Autoclave System
V7502	VistaCool - Double Autoclave System
V7601	VistaCool 3 - Single Autoclave System
VistaClear DP†	
V1000-DP	VistaClear DP Cent. Waterline Treatment (10-Operatory)
R9280	Retrofit Kit for Upgrading Legacy Units to the HP System Design to now include Dentapure Cartridge
Recommended Accessories	
R365VC	VistaClear DP Annual Filter Replacement Kit
R9720	VistaClear HP Annual Filter Replacement Kit (does not include DentaPure)
R9721	VistaClear HP Replacement Particulate Filter
R9722	VistaClear HP Replacement Carbon Block Filter
R365HP	Replacement Filter Kit Upgrade from HP to DP
DM125-10C	Upgrade Your Old HP VistaClear 8 Operatory Manifold to a 10 Operatory Manifold
BioSonic† UC150	
60021987	BioSonic UC150 Ultrasonic Cleaner
Recommended Accessories	
UC53	600mL Beaker with Cover & Positioning Ring
60022040	UC150 Basket
60022041	Beaker Holder
60022043	UC150 Replacement Drain Filters
60022044	UC150 Replacement Drain Hose

Schedule a consultation with SciCan | Your Infection Control Specialist to upgrade your instrument reprocessing today!

www.scican.com/us/spec

Distributed by:

USA Office

701 Technology Dr. Canonsburg, PA 15317 USA
T +1 (724) 820-1600
F +1 (724) 820-1479
TF +1 (800) 572-1211
uscustomerservice@scican.com

‡ Manufactured by:

Crosstex International, Inc.

1733 W. Parkside Lane
Phoenix, AZ 85027 / USA
T +1 (800) 531-2221

* Manufactured for:

SciCan Ltd.

1440 Don Mills Road, Toronto, ON M3B 3P9
T +1 (416) 445-1600
F +1 (416) 445-2727
TF +1 (800)-667-7733
customerservice@scican.com

Manufactured by:

SciCan Ltd.

1440 Don Mills Road, Toronto, ON M3B 3P9
T +1 (416) 445-1600
F +1 (416) 445-2727
TF +1 (800)-667-7733
customerservice@scican.com

‡ Manufactured by:

Coltene/Whaledent Inc.

235 Ascot Parkway
Cuyahoga Falls, OH 44223 / USA
Tel. USA & Canada +1 800 221 3046
+1 330 916 8800
Fax +1 330 645 8704
info.us@coltene.com

SD-527 US EN R4. STATIM, STATCLAVE, HYDRIM, OPTIM are registered trademarks and SciCan SPEC, ENSURE, and STATMATIC are trademarks of SciCan Ltd. VistaCool, VistaPure, DrainHub, VistaClear, and DentaPure are trademarks of Crosstex International, Inc. BioSonic is a registered trademark of Coltene/Whaledent Inc.

